

THE SETTLEMENT GRANTS PROGRAM 2011-2012

The Settlement Grants Program (SGP) is a Federal Government grant program which provides funding to organisations to help new arrivals settle in Australia. The program targets clients who are permanent residents, have been in Australia less than five years and who are either humanitarian entrants, family stream migrants with low levels of English proficiency, or dependents of skilled migrants with low English proficiency who have settled in rural or regional areas. Data contained in this overview has been compiled from the Department of Immigration and Citizenship website.¹

2011-12 GRANTS – by State and Territory

In 2011-12, \$53,276,074 in SGP grant money was announced for 179 projects to be delivered by 146 organisations.² Figures 1 and 2 show the distribution of these grants by state and territory both in dollar terms and number of years. This year there was a significant increase in the overall funding announced; however, this was due to an increase in the proportion of two or three year grants. Actual expenditure on SGP increased by only 6%, as funding will be spread over the next three years. In the 2010-11 financial year, \$35,620,839 of funding was allocated to 312 SGP grants.³ In the 2011-12 financial year, \$37,827,173 has been allocated to 203 SGP grants.

The two states which settle the largest number of humanitarian entrants – NSW and Victoria – received 62.3% of the total grant money for this funding round.

In 2011-12, the average amount of funding per project was \$258,944. However, the average grant amount per year per project was \$153,490, reflecting the increase in spending on multi-year grants. The average grant amount per project was the greatest in Victoria (\$361,953) and the lowest in Tasmania (\$133,950).

Figure 1. 2011-12 SGP grants announced by State/Territory, number of years and total grant awarded

	Projects (#)	Grant Amount (\$)	Project Years ⁴	Proportion of total SGP grants (%)	Average grant per year (\$)	Average grant per project (\$)
ACT	5	1,026,595	9	1.9%	\$114,066	\$205,319
NSW	62	17,636,575	97	33.1%	\$181,820	\$284,461
NT	2	427,500	3	0.8%	\$142,500	\$213,750
QLD	27	7,555,825	48	14.2%	\$157,413	\$279,845
SA	15	4,349,054	26	8.2%	\$167,271	\$289,937
TAS	5	669,752	6	1.3%	\$111,625	\$133,950
VIC	43	15,563,997	82	29.2%	\$189,805	\$361,953
WA	20	6,046,776	37	11.3%	\$163,426	\$302,339
Total	179	53,276,074	308	100.0%	\$153,490	\$258,944

¹ <http://www.immi.gov.au/living-in-australia/delivering-assistance/settlement-grants/funded-orgs.htm>

² Organisations which have been funded in more than one state or territory have been counted as separate organisations. For example, The Song Room has been funded in Victoria and NSW, and has been counted as two organisations.

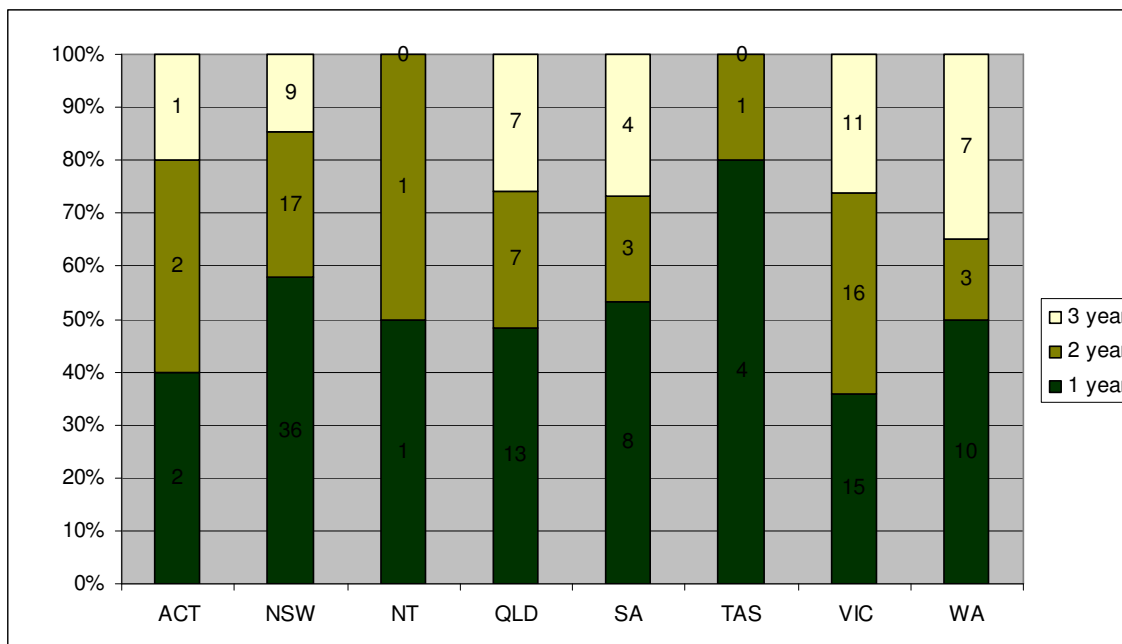
³ This includes multi-year grants that were announced in previous funding rounds and are now in their second and third year.

⁴ Sum of 1, 2 and 3 year grants

2011-12 GRANTS – by length of grants

Figure 2 shows that the distribution of one-, two- and three-year grants was more evenly spread across the states and territories in comparison to the 2010-11 SGP funding round.⁵ However, the Northern Territory and Tasmania did not receive any three-year grants and NSW received a comparatively smaller proportion of three year grants.

Figure 2. Proportion of 1-, 2- and 3-year SGP grants by State/Territory, 2011-12 funding round



2011-12 GRANTS – by funded organisations

Figure 3 provides a list of the 163 organisations that are currently funded under the Settlement Grants Program.⁶ The table includes the total 2011-12 SGP grant monies received by each organisation, as well as the number of grants held. The 14 organisations highlighted in red are those that were newly funded under the SGP in 2011-12. Figure 4 also highlights the large number of organisations (91, or 55.8%) whose SGP funding will end this financial year, and the 53 organisations that have received one-year grants for two or more consecutive years.

Figure 3. Organisations funded under the SGP by State/Territory, 2011-12

Organisation	Total 2011-12 \$ grant amount	Funding ends 2011-12	# consecutive one year grants
ACT			
Migrant and Refugee Settlement Services of the ACT Inc.	256,312	X	
Multicultural Council of Wagga Wagga	203,403		
Albury Wodonga Volunteer Resource Bureau	124,827		
Queanbeyan Multilingual Centre	92,460	X	
Woden Community Service	86,681	X	
Wodonga City Council	84,833		
Griffith City Council	66,822	X	
Riverina Community College	35,064	X	4

⁵ http://www.refugeecouncil.org.au/resources/reports/2010_SGP.pdf

⁶ This includes organisations who were funded for multi-year grants in previous years

Organisation	Total 2011-12 \$ grant amount	Funding ends 2011-12	# consecutive one year grants
NSW			
The Hills Holroyd Parramatta Migrant Resource Centre	1,130,901		
Cabramatta Community Centre Inc	1,106,348		
Metro Migrant Resource Centre Inc.	1,017,181		
Auburn Diversity Services Inc.	975,857		
Liverpool Migrant Resource Centre Inc	950,752		
Northern Settlement Services	897,616		
SydWest Multicultural Services Inc.	882,638		
Illawarra Multicultural Services Inc	502,677	X	
The Trustees of St Vincent de Paul	439,817		
Sydney Anglican Home Mission Society Council	435,590		
St George Migrant Resource Centre Inc.	369,869	X	
Macarthur Diversity Services Inc	287,100		
Mt Druitt Ethnic Communities Agency	250,435		
Chinese Australian Services Society Co-op Ltd	242,361	X	4
STARTTS	240,118		
Vietnamese Community in Australia - NSW Chapter Inc.	176,094	X	2
Thai Welfare Association Inc	163,250	X	5
Australia Korean Welfare Assoc. Ltd	160,990	X	2
Sydney Multicultural Community Services Inc	143,530		
Asian Women at Work Inc	140,380		
Nepean Migrant Access Inc.	108,523	X	4
Hornsby Council	103,083	X	4
Manly Community Centre Inc.	97,582		
CatholicCare (Formerly Centacare Catholic Community Welfare Services)	97,415	X	2
Fairfield Community Resource Centre	97,325	X	
Communicare Inc.	95,815	X	
Iranian Community Organisation	95,385	X	4
Youth Off The Streets	95,350	X	
Assyrian Australian Association	93,350	X	2
Auburn Youth Centre Inc.	91,087		
Indonesian Welfare Association Inc.	91,050	X	4
Lebanese Community Council of NSW	90,975	X	4
Philippine Australian Community Services Inc	90,860	X	6
Christian Community Aid Service Inc.	90,593	X	4
NSW Spanish And Latin American Association for Social Assistance	89,725	X	2
The Smith Family	88,434	X	
Gynea Community Aid and Information Service Inc	87,780	X	2
North Sydney Community Service Ltd	85,780	X	6
Orange City Council	84,048	X	
Australian Chinese Community Association of NSW	80,930	X	
United Muslim Women Association Inc.	80,930	X	4
St Anthony's Family Care	79,321		
Manning Valley Neighbourhood Services Inc.	78,230	X	3
Bathurst Information and Neighbourhood Centre Inc.	76,734	X	2
Dubbo Neighbourhood Centre inc.	75,536	X	3
Association of Bhanin El Minieh - Australian Arabic Community Welfare Centre Inc	74,013	X	5
Khmer Community of NSW Inc.	73,530	X	4
St George Lebanese Joint Committee Inc.	73,250	X	4
NSW Auburn Turkish Islamic Cultural Centre	72,890	X	2
Bankstown Multicultural Youth Service Inc	72,634	X	
Angels of Mercy Welfare Services Inc.	70,376	X	3
Melkite Catholic Eparchy Corporation	70,360	X	6
Ashfield Municipal Council	54,933	X	
The Song Room Inc (VIC)	52,263	X	
NT			
Multicultural Council of the NT Incorporated	284,000	X	6
Synod of the Diocese of the Northern Territory (Inc)	186,000	X	
The Salvation Army (NT) Property Trust	70,000		

Organisation	Total 2011-12 \$ grant amount	Funding ends 2011-12	#consecutive one year grants
QLD			
Multicultural Development Association Inc.	1,023,676		
Assisting Collaborative Community Employment Support Services Inc	560,000		
The Roman Catholic Trust Corporation for the Diocese of Cairns (Centacare Cairns)	520,000	X	
St. Vincent de Paul Society Qld.	400,000		
Multicultural Families Organisation Inc	237,500		
Corporation of Roman Catholic Diocese of Toowoomba	217,500	X	
Multilink Community Services Inc	215,000		
4WALLS Ltd	210,000		
Queensland Program of Assistance to Survivors of Torture and Trauma	177,000	X	2
Townsville Intercultural Centre Ltd	170,000		
Inala Community House	168,256		
Corporation of the Trustees of the Order of the Sisters of Mercy in Qld	152,000		
Islamic Women's Association of Queensland Inc.	110,000		
Lockyer Valley Regional Council	90,000		
Townsville Multicultural Support Group Inc.	90,000	X	
Maroochy Neighbourhood Centre Inc (The)	86,000	X	3
Refugee and Immigration Legal Service Inc.	85,428		
Multicultural Community Centre	85,000		
George Street Neighbourhood Centre Association Inc.	53,000	X	2
Hervy Bay Neighbourhood Centre Association Inc.	50,000	X	3
Queensland African Communities Council	50,000	X	
Kenalwyn Bundaberg & District Neighbourhood	48,000	X	
Multicultural Information Network Service Inc	45,500	X	6
Migrant Centre Organisation Inc.	42,000		
SA			
Australian Refugee Association Inc.	666,682		
Migrant Resource Centre of South Australia Inc	403,000		
Lutheran Church of Australia - SA/NT District	368,000		
Multicultural Youth South Australia Inc.	279,000		
Youthjet	260,000	X	
African Communities Council of South Australia Inc.	118,000		
Middle Eastern Communities Council of SA Inc	105,000		
African Women's Federation of SA	100,000	X	2
Sudanese Community Association of Australia Incorporated SA Branch	100,000	X	2
City of Playford	84,000	X	2
Centacare Catholic Family Services	80,000	X	3
The Association of the Burundian Community of South Australia Inc	75,000	X	
Muslim Women's Association of South Australia Incorporated	60,000	X	5
Baptist Care (SA) Inc. (Formerly Baptist Community Services SA Inc)	42,230	X	
VIC			
Spectrum Migrant Resource Centre Inc.	1,335,500		
New Hope Foundation Inc.	1,024,767		
Migrant Information Centre (Eastern Melbourne) Ltd	909,391		
South Eastern Region Migrant Resource Centre	892,000		
Migrant Resource Centre North West Region	710,039		
Springvale Community Aid and Advice Bureau Inc.	491,000		
Eastern and Central Africa Communities of Victoria Inc	410,000	X	
CatholicCare (Formerly Centacare Catholic Family Services)	396,000		
Jesuit Social Services	386,000		
Geelong Ethnic Communities Council Inc.	367,500		
Arabic Welfare Inc. (Formerly Australian Lebanese Welfare Inc.)	321,935	X	2
Whittlesea Community Connections Inc.	310,884	X	
Wyndham Community and Education Centre Inc	273,000		
UnitingCare - Cutting Edge	215,000	X	
Ethnic Council of Shepparton and District Inc.	210,844		
Brotherhood of St. Laurence	200,000		
Southern Ethnic Advisory and Advocacy Council Inc	200,000		
Centre for Multicultural Youth	172,214		
Footscray Football Club (FFC) Limited trading as SpiritWest	160,000	X	

Organisation	Total 2011-12 \$ grant amount	Funding ends 2011-12	#consecutive one year grants
VIC (continued)			
The Song Room Inc	160,000	X	5
Bendigo Community Health Service	159,833		
Sunraysia Mallee Ethnic Communities Council Inc.	140,000	X	4
Anglicare Victoria	135,000		
Chinese Community Social Services Centre Inc.	127,000	X	
Federation of Chinese Associations (Vic) Inc	127,000	X	
Ballarat Community Health	115,970		
Australian Multicultural Association Limited (VIC)	100,000	X	
Cambodian Association of Victoria Inc.	90,000	X	4
Australian Muslim Women's Centre for Human Rights	85,000		
Latrobe Community Health Service	80,000		
Springvale Indo-Chinese Mutual Assistance Assoc. Inc.	80,000	X	6
Women's Health in the South East	80,000		
Victorian Arabic Social Services	70,822	X	
Mallee Family Care	70,000	X	
Community Connections (Victoria) Ltd	40,000	X	6
Wimmera Development Association	40,000		
WA			
Metropolitan Migrant Resource Centre Inc	572,600		
Centrecare Incorporated	424,100		
Edmund Rice Centre, Mirrabooka Inc	415,060		
Multicultural Services Centre of WA Inc.	399,516		
Association for Services to Torture and Trauma Survivors Inc.	220,895		
Fremantle Multicultural Centre	205,720		
Communicare Inc.	203,113		
UCA Assembly Limited	152,468	X	6
Mercy Community Services Incorporated	145,000		
The Gowrie (WA) Inc	108,000	X	
Muslim Women's Support Centre of WA (Inc)	105,000	X	6
Save The Children (WA)	100,000	X	
City of Stirling	95,000	X	4
Rainbow Coast Neighbourhood Centre Inc	91,879	X	6
Salvation Army (WA) Property Trust	85,000	X	2
Australian Asian Assoc. of WA Inc.	77,000	X	6
Ishar Multicultural Womens Health Centre	76,000	X	2
City of Belmont	75,460	X	2

Figure 4 lists the 15 organisations that were funded under the SGP in 2010-11 but that did not receive any funding in the 2011-12 funding round.

Figure 4. Organisations funded under the SGP in 2010-11 that received no SGP funding in 2011-12

NSW	Cambodian-Australian Welfare Council of NSW Inc.
NSW	Vietnamese Women's Association in NSW Inc.
NT	Darwin Community Arts Incorporated
NT	Multicultural Community Services of Central Australia Inc
QLD	Griffith University
QLD	The Corporation of the Synod of the Diocese of Brisbane
SA	Bowden Brompton Community Group Inc

SA	City of Charles Sturt
SA	City of Salisbury
TAS	Relationship Counselling and Mediation Services
VIC	Colac Adult and Community Education Inc.
VIC	Loddon Campaspe Multicultural Services Inc
VIC	Swan Hill Rural City Council
WA	Western Australian Council of Social Service Inc.
WA	Women's Health Care Assn Inc

2011-12 GRANTS – by service type

In 2011-12, the Settlement Grants Program shifted the focus on service types. In previous years, projects fell under three service types: Orientation to Australia, Developing Communities, and Integration – inclusion and participation. This year, projects fell into two streams: Generalist and Specialist. Generalist services comprise two service types: Orientation to Australia and Participation in Australian society. Specialist services were also funded to provide targeted assistance in areas of high need and where there is no other service provider or program in the area. Specialist services include: immigration assistance, housing services and ethno-specific capacity building for newly arrived communities. Figure 5 shows the breakdown of funding by service type.

Figure 5. Number of 2011-12 SGP grants by service type and State/Territory

	Orientation to Australia	Participation in Australian society	Immigration Assistance	Housing Services	Ethno-specific	Other
ACT	3	5	0	0	0	0
NSW	50	34	4	6	7	1
NT	2	1	0	0	0	0
QLD	21	17	2	2	2	0
SA	14	13	0	0	1	0
TAS	2	2	1	1	1	1
VIC	32	31	9	0	2	1
WA	17	16	1	1	1	0
	141	119	17	10	14	3

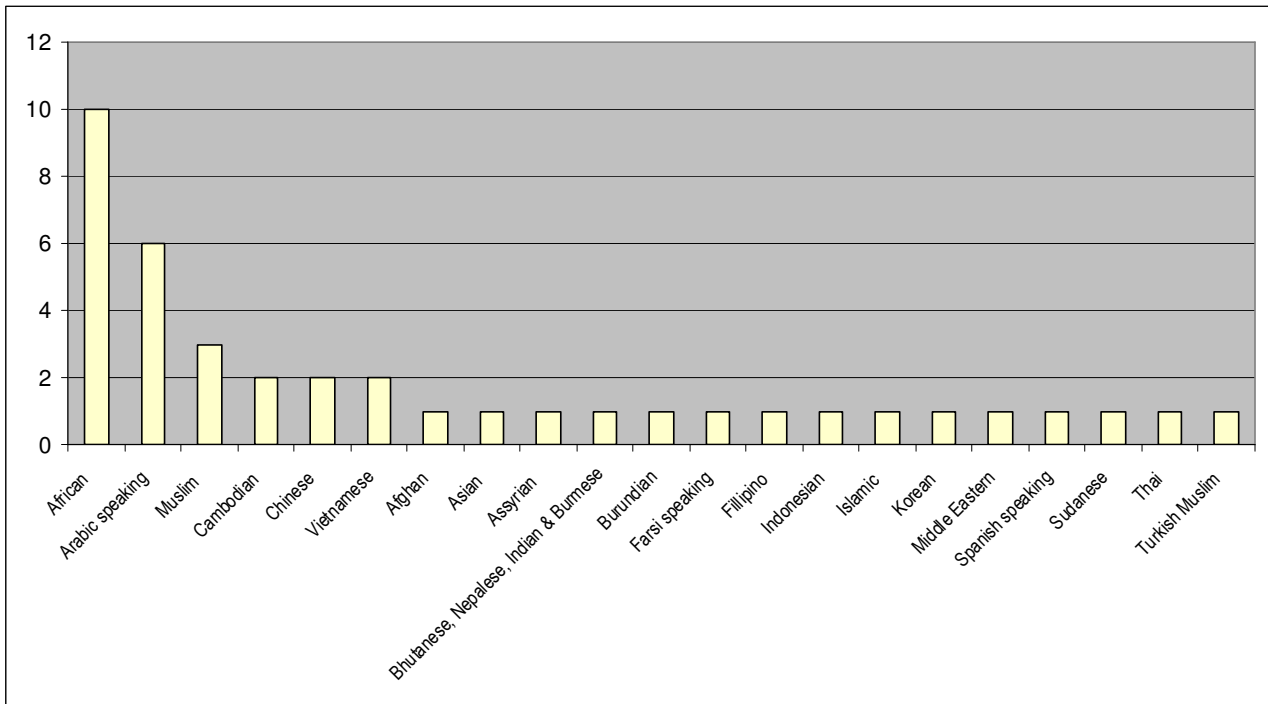
2011-12 GRANTS – by target groups

While most SGP grants are available to all eligible migrants and humanitarian entrants in the service area, there are a number of grants in the 2011-12 funding round that are targeted at specific groups, including women, young people and ethno-specific communities. Figure 7 provides a list of organisations funded to work with particular target groups (W = women, YP = young people). In total, 7 grants were targeted at women, and 19 at young people including grants targeted specifically at students and Unaccompanied Minors. There were 41 grants targeting 20 ethno-specific communities (see Figure 8). The communities most frequently targeted were: African (10 grants), Arabic-speaking (6 grants) and Muslim (5 grants).

Figure 7. Organisations funded to work with particular target groups

State	Organisation	Target group
ACT	Albury Wodonga Volunteer Resource Bureau	YP
NSW	Asian Women at Work	W
NSW	Auburn Youth Centre	YP
NSW	Northern Settlement Services	YP
NSW	The Song Room Inc (VIC)	YP
NSW	Trustees of the Society of St Vincent de Paul	YP
NSW	United Muslim Women Association Inc	W
NSW	Youth Off The Streets	YP
SA	African Communities Council of South Australia	W
SA	Multicultural Youth South Australia	YP
SA	Muslim Women's Assoc, of South Australia	W
SA	Youthjet	YP
QLD	Multicultural Development Association Inc	YP
QLD	Refugee & Immigration Legal Service Inc	YP
TAS	Northern Suburbs Community Centre Inc	YP
VIC	Aus Muslim Women's Centre for Human Rights	W
VIC	CatholicCare Archdiocese of Melbourne	YP
VIC	Centre For Multicultural Youth	YP
VIC	Jesuit Social Services Limited	YP
VIC	Southern Eastern Region MRC	YP
VIC	Southern Ethnic and Advisory Council Inc	YP
WA	City of Belmont	YP
WA	City of Sterling	YP
WA	Ishar Multicultural Womens Health Centre Inc	W
WA	Muslim Women's Support Centre for WA Inc	W
WA	Save The Children (WA)	YP

Figure 8. Number of 2011-12 SGP grants targeting ethno-specific communities



SGP TRENDS 2007-12 – by length of grants

Figures 9 and 10 show the funding trends over the past five years in terms of the length of SGP grants. Overall, there has been an increase in the number of 2-year and 3-year grants, although this is not uniform across the different states and territories. For example, no three year grants have been given in Tasmania or the Northern Territory.

Figure 9. Number of 1-, 2- and 3-year SGP grants, 2007-08 to 2011-12 funding rounds

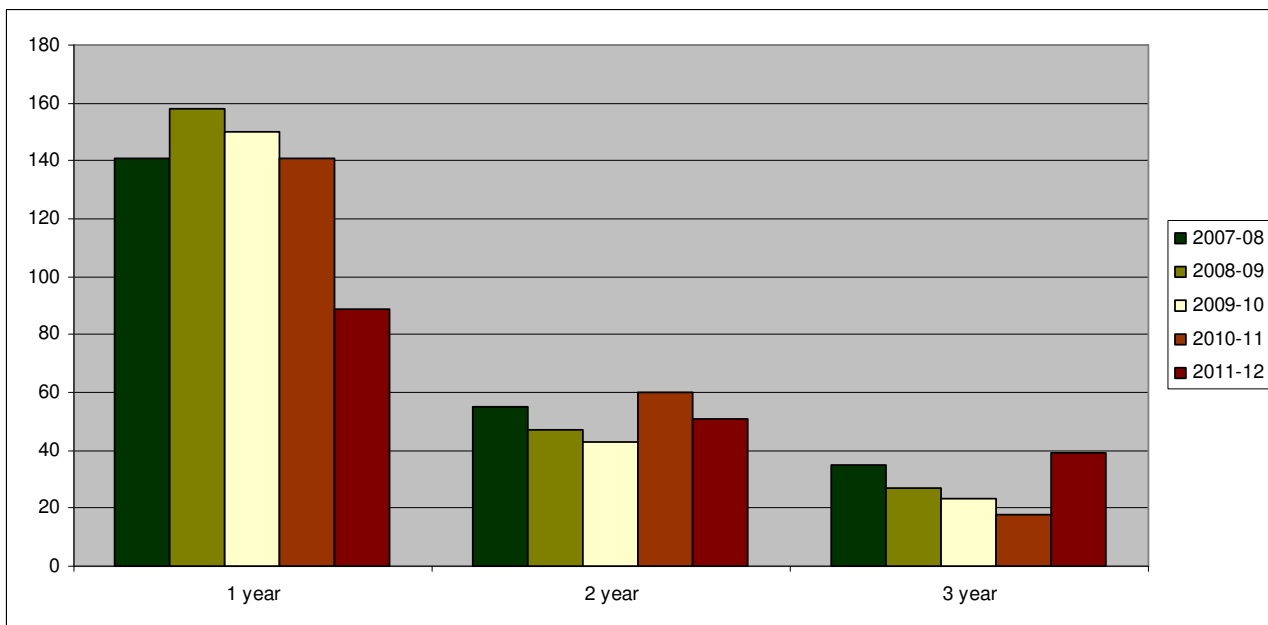


Figure 10. Number of 1-, 2- and 3-year SGP grants by state and territory, 2007-08 to 2011-12 funding rounds

	2007-08			2008-09			2009-10			2010-11			2011-12		
	1 year	2 year	3 year	1 year	2 year	3 year	1 year	2 year	3 year	1 year	2 year	3 year	1 year	2 year	3 year
ACT	3	0	0	7	2	0	6	2	0	3	1	3	2	2	1
NSW	56	29	19	59	24	14	49	22	12	44	21	11	36	17	9
NT	3	0	0	4	0	0	4	0	0	5	1	0	1	1	0
QLD	16	5	2	17	4	1	18	6	1	18	3	0	13	7	7
SA	7	5	2	13	3	3	13	3	1	15	4	0	8	3	4
TAS	4	0	0	8	1	1	8	0	0	5	4	0	4	1	0
VIC	38	11	10	32	11	8	29	9	9	27	22	2	15	17	11
WA	14	5	2	18	2	0	23	1	0	24	4	2	10	3	7
Total	141	55	35	158	47	27	150	43	23	141	60	18	89	51	39