



## THE SETTLEMENT GRANTS PROGRAM 2007-2011: AN OVERVIEW OF FUNDING TRENDS

The Settlement Grants Program (SGP) is a Federal Government grant program which provides funding to organisations to help new arrivals settle in Australia. The program targets clients who are permanent residents, have been in Australia less than five years and who are either humanitarian entrants, family stream migrants with low levels of English proficiency, or dependents of skilled migrants with low English proficiency who have settled in rural or regional areas. Data contained in this overview has been compiled from the Department of Immigration and Citizenship website.<sup>1</sup>

### 2010-11 GRANTS - by State and Territory

In 2010-11, \$34,906,601 in SGP grant money was announced for 219 projects to be delivered by 145 organisations. Figures 1 and 2 show the distribution of these grants by state and territory both in dollar terms and number of years. The two states which settle the largest number of humanitarian entrants – NSW and Victoria – received 59% of the total grant money for this funding round.

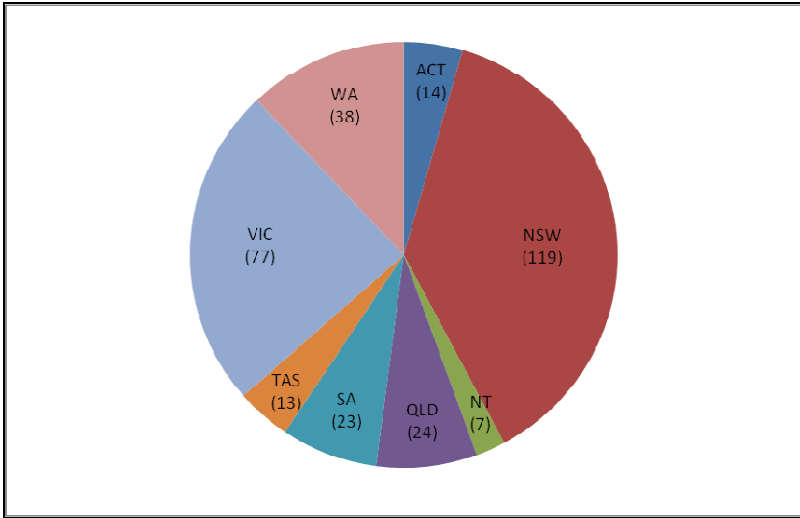
Figure 1. 2010-11 SGP Grants by State/Territory, number of years and total grant awarded

	2010-11 SGP Grants			
	Years <sup>2</sup>	%	\$	%
ACT	14	4.4%	1,687,224	4.8%
NSW	119	37.8%	11,131,447	31.9%
NT	7	2.2%	765,633	2.2%
QLD	24	7.6%	3,370,022	9.7%
SA	23	7.3%	2,402,259	6.9%
TAS	13	4.1%	1,384,177	4.0%
VIC	77	24.4%	9,432,112	27.0%
WA	38	12.1%	4,733,727	13.6%
<b>Total</b>	<b>315</b>	<b>100.0%</b>	<b>34,906,601</b>	<b>100.0%</b>

<sup>1</sup> <http://www.immi.gov.au/living-in-australia/delivering-assistance/settlement-grants/funded-orgs.htm>

<sup>2</sup> Sum of 1, 2 and 3 year grants

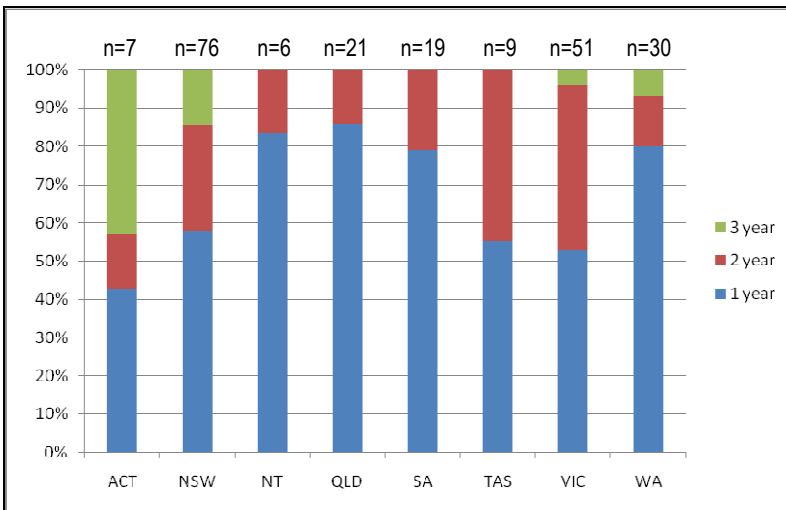
**Figure 2. 2010-11 SGP Grants by State/Territory and total number of years<sup>2</sup>**



**2010-11 GRANTS – by length of grants**

Figure 3 shows that the distribution of one-, two- and three-year grants was unevenly spread across the different states and territories. The Northern Territory, South Australia, Queensland and Tasmania did not receive any three-year grants, while three of the seven grants received by organisations in the ACT were for three-year projects.

**Figure 3. Proportion of 1-, 2- and 3-year SGP grants by State/Territory, 2010-11**



**2010-11 GRANTS – by funded organisations**

Figure 4 provides a list of the 164 organisations that are currently funded under the Settlement Grants Program (this includes organisations who were funded for multiple year grants in previous years). The table includes the total 2010-11 SGP grant monies received by each organisation, as well as the number of grants held.

In 2010-11, the average amount of funding per grant was \$114,169. The average grant amount was highest in Queensland (\$155,026) and lowest in Tasmania (\$92,687). The 19 organisations highlighted in red are those that were newly funded under the SGP in 2010-11. Figure 4 also highlights the large number of organisations (109, or 66.5%) whose SGP funding will end this financial year, and the 24 organisations that have received one-year grants for two or more consecutive years.

**Figure 4. Organisations funded under the SGP by State/Territory, 2010-11**

Organisation	Total 2010-11 grant amount <sup>3</sup>	# current SGP grants <sup>3</sup>	Funding ends 2010-11	# consecutive 1-year grants
<b>ACT<sup>4</sup> (Average amount per grant – \$99,840)</b>				
Migrant and Refugee Settlement Services of the ACT Inc.	262,992	2		
Multicultural Council of Wagga Wagga	173,572	1	X	4
Queanbeyan Multilingual Centre	95,110	1		
Woden Community Service	85,400	1		
Griffith City Council	82,194	1	X	
Albury Wodonga Volunteer Resource Bureau	76,041	1		
Wodonga City Council	68,250	1	X	
Riverina Community College	55,000	1	X	3
<b>NSW (Average amount per grant – \$97,057)</b>				
Cabramatta Community Centre Inc	1,073,221	11		
The Hills Holroyd Parramatta Migrant Resource Centre	1,038,794	10		
Northern Settlement Services	950,583	9		
Auburn Diversity Services Inc.	870,533	9		
SydWest Multicultural Services Inc.	816,985	7		
Metro Migrant Resource Centre Inc.	794,807	9		
Liverpool Migrant Resource Centre Inc	756,798	6		
Illawarra Multicultural Services Inc	539,580	5		
Macarthur Diversity Services Inc	383,392	4	X	
St George Migrant Resource Centre Inc.	362,615	4		
The Trustees of the Society of St Vincent de Paul (NSW)	316,942	2	X	
Mt Druitt Ethnic Communities Agency	253,437	3		
Chinese Australian Services Society Co-op Ltd	227,313	3	X	
Sydney Anglican Home Mission Society Council	224,552	2	X	
Hornsby Council	164,646	1	X	3
The Smith Family	162,471	1		
Australia Korean Welfare Assoc. Ltd	151,542	2	X	
Vietnamese Community in Australia - NSW Chapter Inc.	151,273	2	X	
STARTTS	150,883	1	X	
Centacare Catholic Community Welfare Services	141,200	1	X	
Sydney Multicultural Community Services Inc	140,716	2		
Asian Women at Work Inc	132,651	1	X	
Nepean Migrant Access Inc.	118,954	1	X	
Assyrian Australian Association	90,517	1	X	
Thai Welfare Association Inc	88,872	1	X	
Auburn Youth Centre Inc.	88,434	1	X	
Philippine Australian Community Services Inc	88,215	1	X	
Indonesian Welfare Association Inc.	84,485	1	X	
NSW Spanish And Latin American Association for Social Assistance	84,445	1	X	
Angels of Mercy Welfare Services Inc.	81,600	1	X	2
Orange City Council	81,600	1	X	
GyMEA Community Aid and Information Service Inc	81,183	1	X	
United Muslim Women Association Inc.	80,930	1	X	
Friends of Startts Inc	80,000	1	X	

<sup>3</sup> Includes grants from 2008-09, 2009-10 and 2010-11 funding rounds.

<sup>4</sup> Some of the organisations listed by DIAC under the ACT grants program are in NSW (e.g. Wagga Wagga, Albury). We have used the DIAC State/Territory groupings.

North Sydney Community Service Ltd	79,507	1	X	
Manly Community Centre Inc.	79,300	1	X	2
Christian Community Aid Service Inc.	78,030	1	X	
Iranian Community Organisation	76,812	1	X	
St Anthony's Family Care	75,806	1	X	
Lebanese Community Council of NSW	75,771	1	X	
Bankstown Multicultural Youth Service Inc	71,210	1		
St George Lebanese Joint Committee Inc.	71,200	1	X	
Association of Bhanin El Minieh - Australian Arabic Community Welfare Centre	70,359	1	X	
NSW Auburn Turkish Islamic Cultural Centre	70,359	1	X	
Bathurst Information and Neighbourhood Centre Inc.	68,979	1	X	
Vietnamese Women's Association in NSW Inc.	64,733	1	X	
Melkite Catholic Eparchy Corporation	62,534	1	X	
Cambodian-Australian Welfare Council of NSW Inc.	60,645	1	X	
Khmer Community of NSW Inc.	60,645	1	X	
Dubbo Neighbourhood Centre inc.	59,533	1	X	
Manning Valley Neighbourhood Services Inc.	55,523	1	X	
<b>Organisation</b>	<b>Total 2010-11 grant amount</b>	<b># current SGP grants</b>	<b>Funding ends 2010-11</b>	<b># consecutive 1-year grants</b>
<b>NT (Average amount per grant - \$96,605)</b>				
Multicultural Council of the NT Incorporated	206,685	2	X	5
Synod of the Diocese of the Northern Territory (Inc)	182,067	1		
Multicultural Community Services of Central Australia Inc	68,500	1	X	5
The Salvation Army (NT) Property Trust	66,381	1	X	
Darwin Community Arts Incorporated	56,000	1	X	
<b>Organisation</b>	<b>Total 2010-11 grant amount</b>	<b># current SGP grants</b>	<b>Funding ends 2010-11</b>	<b># consecutive 1-year grants</b>
<b>QLD (Average amount per grant - \$155,026)</b>				
Multicultural Development Association Inc.	908,880	3		
Assisting Collaborative Community Employment Support Services Inc.	520,000	2	X	
Centacare Cairns	470,000	1		
St. Vincent de Paul Society Qld.	356,592	2		
Corporation of Roman Catholic Diocese of Toowoomba	235,000	2		
Multicultural Families Organisation Inc	225,000	1		
MultiLink Community Services Inc	205,752	1	X	
4WALLS Ltd	180,000	1	X	2
Queensland Program of Assistance to Survivors of Torture & Trauma	165,000	1	X	
Inala Community House	158,723	1	X	
Spiral Community Hub Ltd	130,000	1	X	
The Corporation of the Synod of the Diocese of Brisbane	118,000	1	X	2
Townsville Intercultural Centre Ltd	116,150	1	X	
Corporation of the Trustees of the Order of the Sisters of Mercy in Queensland	98,000	1	X	3
Islamic Women's Association of Queensland Inc.	96,000	1	X	
Townsville Multicultural Support Group Inc.	84,888	1	X	
Hervey Bay Neighbourhood Centre Association Inc.	75,600	1	X	
Multicultural Community Centre	74,180	1	X	
Maroochy Neighbourhood Centre Inc	72,000	1	X	
George Street Neighbourhood Centre Association Inc.	50,000	1	X	
Multicultural Information Network Service Inc	43,000	1	X	
Griffith University	40,000	1	X	3
Migrant Centre Organisation Inc.	40,000	1	X	
Refugee and Immigration Legal Service Inc.	33,000	1	X	2

Organisation	Total 2010-11 grant amount	# current SGP grants	Funding ends 2010-11	# consecutive 1-year grants
<b>SA</b> (Average amount per grant – \$114,643)				
Australian Refugee Association Inc.	638,649	4		
Lutheran Church of Australia - SA/NT District	385,938	2	X	
Migrant Resource Centre of South Australia Inc	325,774	3	X	
Multicultural Youth South Australia Inc.	275,468	2		
Youthjet	263,435	2		
Baptist Care (SA) Inc.	218,176	3		
Bowden Brompton Community Group Inc	122,654	1	X	3
African Communities Council of South Australia Inc.	118,000	1	X	
African Women's Federation of SA	100,000	1	X	
Sudanese Community Association of Australia Incorporated SA Branch	100,000	1	X	
Middle Eastern Communities Council of SA Inc	87,407	1	X	
Centacare Catholic Family Services	76,462	1	X	2
City of Salisbury	76,000	1	X	
City of Playford	67,000	1	X	
City of Charles Sturt	63,950	1	X	
Muslim Women's Association of South Australia Incorporated	61,800	1	X	
Organisation	Total 2010-11 grant amount	# current SGP grants	Funding ends 2010-11	# consecutive 1-year grants
<b>TAS</b> (Average amount per grant – \$92,687)				
Migrant Resource Centre (Southern Tasmania) INC	307,464	4		
The Roman Catholic Trust Corporation of the Archdiocese of Hobart	260,660	3	X	
Migrant Resource Centre (Northern Tasmania) Inc.	213,747	1		
Relationship Counselling and Mediation Services Inc	85,000	1	X	3
Launceston Community Legal Centre Inc	60,000	1	X	
Organisation	Total 2010-11 grant amount	# current SGP grants	Funding ends 2010-11	# consecutive 1-year grants
<b>VIC</b> (Average amount per grant – \$103,741)				
New Hope Foundation Inc.	1,223,393	7		
South Eastern Region Migrant Resource Centre	886,709	6		
Spectrum Migrant Resource Centre Inc.	790,000	3		
Migrant Information Centre (Eastern Melbourne) Ltd	776,659	4		
Migrant Resource Centre North West Region	715,579	3		
Eastern and Central Africa Communities of Victoria Inc	408,200	3		
Centacare Catholic Family Services	394,893	4		
Springvale Community Aid and Advice Bureau Inc.	388,979	4		
Jesuit Social Services	380,000	3		
Geelong Ethnic Communities Council Inc.	327,500	2		
Arabic Welfare Inc.	320,335	4		
Whittlesea Community Connections Inc.	308,884	4		
Islamic Women's Welfare Council of Victoria	281,519	3		
Southern Ethnic Advisory and Advocacy Council Inc	216,900	2	X	
UnitingCare - Cutting Edge	200,000	2		
Brotherhood of St. Laurence	200,000	2	X	
Ethnic Council of Shepparton and District Inc.	200,000	1	X	
Centre for Multicultural Youth	174,000	2		
Footscray Football Club (FFC) Limited trading as SpiritWest	160,000	1		
The Song Room Inc	160,000	2	X	4
Werribee Community and Education Centre Inc	150,000	1		
Chinese Community Social Services Centre Inc.	127,000	1		
Federation of Chinese Associations (Vic) Inc	127,000	1		
Anglicare Victoria	120,000	1		
Loddon Campaspe Multicultural Services Inc	120,000	1	X	2
Cambodian Association of Victoria Inc.	110,000	1	X	3
Sunraysia Mallee Ethnic Communities Council Inc.	110,000	1	X	3

Ballarat Community Health	100,000	1		
Swan Hill Rural City Council	100,000	1	X	4
Springvale Indo-Chinese Mutual Assistance Assoc. Inc.	88,000	1	X	
Latrobe Community Health Service	80,000	1	X	
Women's Health in the South East	80,000	1	X	
Victorian Arabic Social Services	70,822	1		
Colac Adult and Community Education Inc.	50,000	1	X	2
Community Connections (Victoria) Ltd	48,000	1	X	
<b>Organisation</b>	<b>Total 2010-11 grant amount</b>	<b># current SGP grants</b>	<b>Funding ends 2010-11</b>	<b># consecutive 1-year grants</b>
<b>WA (Average amount per grant - \$119,671)</b>				
Metropolitan Migrant Resource Centre Inc	384,507	2		
Multicultural Services Centre of WA Inc.	381,522	3		
Edmund Rice Centre, Mirrabooka Inc	366,390	3	X	
Centrecare Incorporated	362,000	3		
Communicare Inc.	266,144	2	X	
Association for Services to Torture and Trauma Survivors Inc.	234,268	2	X	
The Gowrie (WA) Inc	228,815	2		
Fremantle Multicultural Centre	226,042	2	X	
UCA Assembly Limited	166,000	1	X	
Mercy Community Services Incorporated	140,800	1	X	4
Rainbow Coast Neighbourhood Centre Inc	127,000	1	X	
Women's Health Care Assn Inc	120,797	1	X	
Muslim Women's Support Centre of WA (Inc)	114,600	1	X	
City of Stirling	95,000	1	X	3
Western Australian Council of Social Service Inc.	94,538	1	X	3
Extra Edge Services Inc	87,668	1	X	
Salvation Army (WA) Property Trust	80,000	1	X	
Australian Asian Assoc. of WA Inc.	79,720	1	X	
City of Belmont	78,000	1	X	
Ishar Multicultural Womens Health Centre	76,000	1	X	

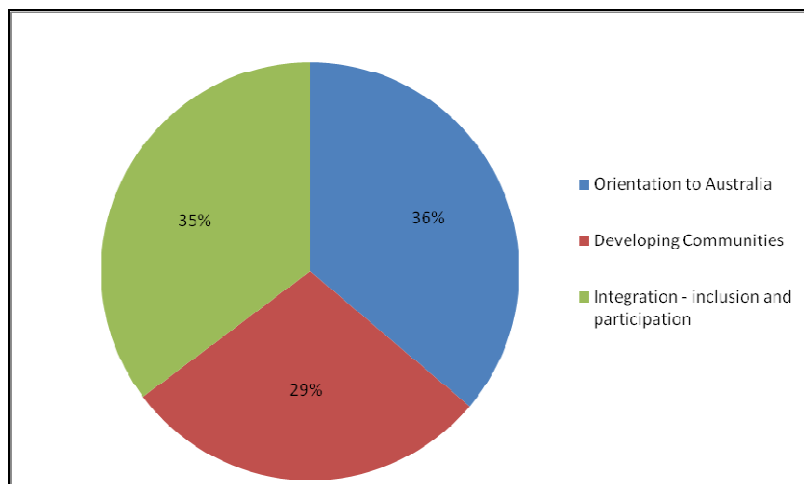
Figure 5 lists the 25 organisations that were funded under the SGP in 2009-10 but that did not receive any funding in the 2010-11 funding round.

**Figure 5. Organisations funded under the SGP in 2009-10 that received no SGP funding in 2010-11**

NSW	Australian Chinese Community Association of NSW Inc.	NT	International College of Advanced Education P/L
NSW	Cherrybrook Chinese Community Association Inc.	QLD	Australian Nutrition Foundation (Queensland Division) Inc
NSW	Chinese Migrant Welfare Association Inc	QLD	Gladstone Area Promotion and Development Limited
NSW	ECHO Bondi Junction Neighbourhood Centre Inc.	QLD	Lifeline Darling Downs and South West Queensland Ltd
NSW	Lao Community Advancement (NSW) Co-operative Ltd	QLD	Mount Isa Community Development Association Inc.
NSW	Mercy Works Inc.	SA	Survivors of Torture & Trauma Assistance & Rehabilitation Service
NSW	Pacific Island Women's Advisory and Support Service Inc	SA	Riverland Multicultural Forum Incorporated
NSW	Serbian Orthodox Welfare Assoc. of NSW Inc.	TAS	Colony 47 Inc
NSW	The Australian National Committee on Refugee Women (ANCORW) Co-operative Ltd	VIC	Ballarat Regional Multicultural Council Inc
NSW	Timorese Australian Council Inc.	VIC	Dianella Community Health
NSW	Turkish Welfare Association Inc.	VIC	Gippsland Multicultural Services Inc
NSW	Vietnamese Australian Welfare Association NSW Inc	VIC	Kurdish Association of Victoria



**Figure 7. All 2010-11 SGP grants by service type**



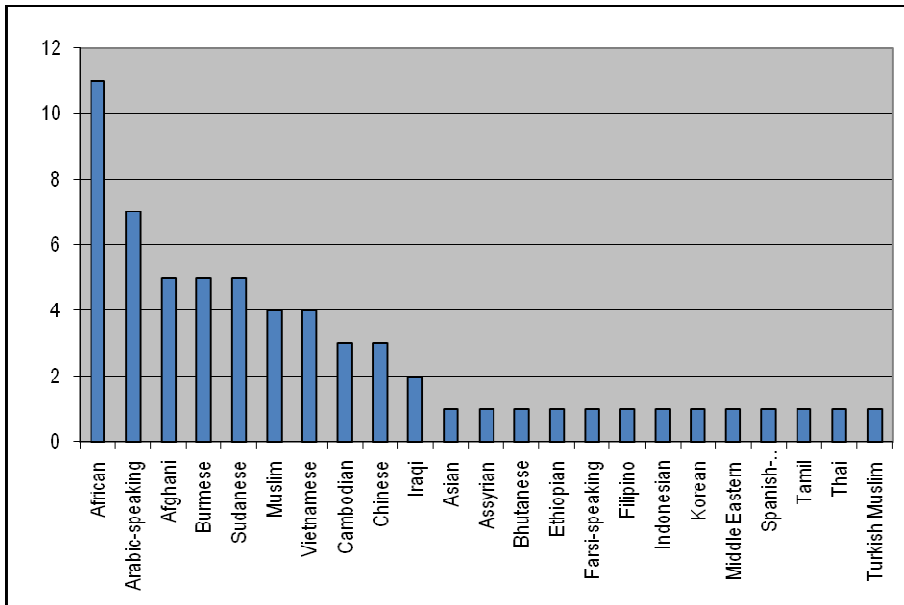
## 2010-11 GRANTS - by target groups

While most SGP grants are available to all eligible migrants and humanitarian entrants in the service area, there are a number of grants in the 2010-11 funding round that are targeted at specific groups, including women, young people, men and ethno-specific communities. Figure 8 provides a list of organisations funded to work with particular target groups (W = women, YP = young people, M = men). In total, 16 grants were targeted at women, 1 at men, and 31 at young people. There were 62 grants targeting 23 ethno-specific communities (see Figure 9). The communities most frequently targeted were: African (11 grants), Arabic-speaking (7 grants), Afghani, Burmese and Sudanese (5 grants each).

**Figure 8. Organisations funded to work with particular target groups**

Organisation	State	Target Group	Organisation	State	Target Group
Cabramatta Community Centre Inc	NSW	W, YP	African Women's Federation of SA	SA	W
Auburn Diversity Services Inc.	NSW	W, YP	Muslim Women's Association of South Australia Inc	SA	W
The Hills Holroyd Parramatta MRC	NSW	YP	The Roman Catholic Trust Corporation of the Archdiocese of Hobart	TAS	W
Metro Migrant Resource Centre Inc.	NSW	YP	Spectrum Migrant Resource Centre Inc.	VIC	W
SydWest Multicultural Services Inc.	NSW	W, YP	New Hope Foundation Inc.	VIC	YP (x2)
Liverpool Migrant Resource Centre Inc	NSW	YP	Centacare Catholic Family Services	VIC	YP
Northern Settlement Services	NSW	YP	Whittlesea Community Connections Inc.	VIC	YP
Illawarra Multicultural Services Inc	NSW	YP	Springvale Community Aid and Advice Bureau Inc.	VIC	YP
Sydney Multicultural Community Services Inc	NSW	W, YP (x2), M	Centre for Multicultural Youth	VIC	YP
Mt Druitt Ethnic Communities Agency	NSW	YP	Brotherhood of St. Laurence	VIC	YP
St George Migrant Resource Centre Inc.	NSW	YP	The Song Room Inc	VIC	YP
Bankstown Multicultural Youth Service Inc	NSW	YP	Southern Ethnic Advisory and Advocacy Council Inc	VIC	YP
Asian Women at Work Inc	NSW	W	Women's Health in the South East	VIC	W
United Muslim Women Association Inc.	NSW	W	Centrecare Incorporated	WA	YP
Vietnamese Women's Association in NSW Inc.	NSW	W	Metropolitan Migrant Resource Centre Inc	WA	YP
Darwin Community Arts Incorporated	NT	W	The Gowrie (WA) Inc	WA	YP
Multicultural Development Association Inc.	QLD	YP	Women's Health Care Assn Inc	WA	W
Refugee and Immigration Legal Service Inc.	QLD	YP	Muslim Women's Support Centre of WA (Inc)	WA	W
Youthjet	SA	YP (x2)	City of Stirling	WA	YP
Multicultural Youth South Australia Inc.	SA	YP	Ishar Multicultural Womens Health Centre	WA	W

**Figure 9. Number of 2010-11 SGP grants targeting ethno-specific communities**



**SGP TRENDS 2007-11 – by length of grants**

Figures 10 and 11 show the funding trend over the past four years in terms of the length of grants. Overall, there has been some increase in the number of 2-year grants but a noticeable decrease in the number of 3-year grants (35 in 2007-08 and 18 in 2010-11). Across the states and territories, NSW has seen a steady decrease in the number of 3-year grants (19 in 2007-08, 14 in 2008-09, 12 in 2009-10 and 11 in 2010-11). Victorian organisations saw a sharp increase in the proportion of 2-year grants in 2010-11 (22 compared with 9, 11 and 11 in the previous years).

**Figure 10. Trends in length of SGP grants, 2007-08 to 2010-11 funding rounds**

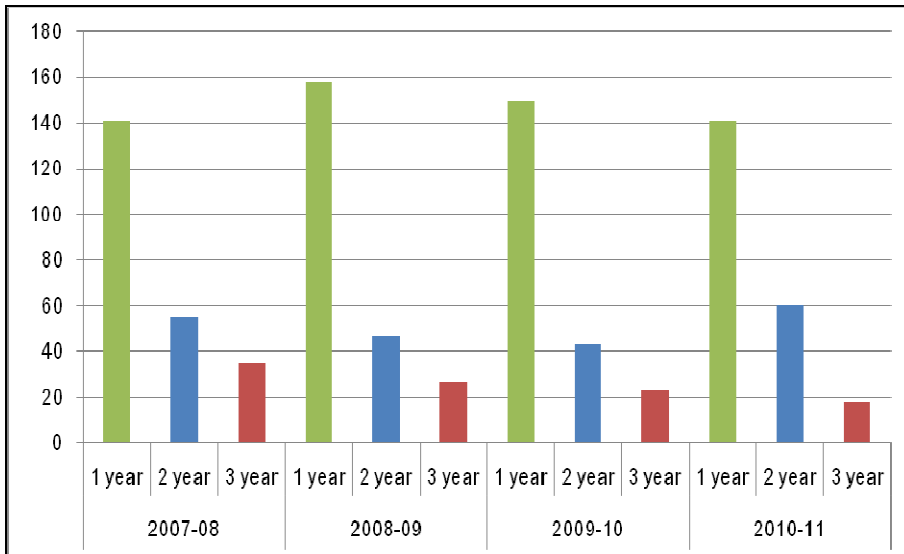


Figure 11. Number of 1-, 2- and 3-year SGP grants by state and territory, 2007-08 to 2010-11 funding rounds

	2007-08			2008-09			2009-10			2010-11		
	1 year	2 year	3 year	1 year	2 year	3 year	1 year	2 year	3 year	1 year	2 year	3 year
ACT	3	0	0	7	2	0	6	2	0	3	1	3
NSW	56	29	19	59	24	14	49	22	12	44	21	11
NT	3	0	0	4	0	0	4	0	0	5	1	0
QLD	16	5	2	17	4	1	18	6	1	18	3	0
SA	7	5	2	13	3	3	13	3	1	15	4	0
TAS	4	0	0	8	1	1	8	0	0	5	4	0
VIC	38	11	10	32	11	8	29	9	9	27	22	2
WA	14	5	2	18	2	0	23	1	0	24	4	2
<b>Total</b>	<b>141</b>	<b>55</b>	<b>35</b>	<b>158</b>	<b>47</b>	<b>27</b>	<b>150</b>	<b>43</b>	<b>23</b>	<b>141</b>	<b>60</b>	<b>18</b>